



**Birkenhead
Primary
School**


Parent Handbook 2024





CONTENTS

Message from the Principal
About our School
Strategic Goals
Our Staff
Our Teams
Composite Classrooms
Welcome / Mihi Whakatau
School Times
Pick ups and Drop offs
After School Care
Attendance
Keeping us Informed
Reporting to Parents
Lunch
Playgrounds
Lunch Time Activities
Uniform
Sun Safety
Clothing and Footwear
Term Dates
Stationery
Special Items
School Contributions
Behaviour Plan
Leadership Opportunities
After School Sports
Homework
Library
Assemblies
Swimming
Education Outside the Classroom
ESOL
EnviroSchool
Parent Help
PTA
Board of Trustees
HERO - Parent Portal
Website/Facebook/Cyber Safety
Enrolment Process & Checklist
Northcote Kāhui Ako
Commonly Used Phrases



Message from the Principal



Tena koutou katoa,
E ngā tamariki, e ngā whānau, e ngā kaiako hoki, nau mai haere mai.
Ko Francis Naera tōku ingoa, he tumuaki mo tēnei Kura.
Nau mai haere mai ki te Kura tuatahi o Birkenhead
Ngā mihi,

Ehara taku toa i te toa takitahi, engari he toa takimano
My strength is not that of an individual but that of the collective.

Welcome to Birkenhead Primary School (BPS). We are a friendly school starting the year with approximately 450 students from Years 0-6. We have a reputation for high standards, highly skilled and caring teachers, and well-developed learning programmes. We are lucky to have a dedicated Board that ensures excellent facilities, resources and high levels of professional learning for staff to ensure that BPS remains highly valued by its families and whānau.

BPS encourages a close and collaborative relationship (mahi tahi) with its local community, which comprises a variety of cultures. All are welcomed and celebrated at our school. Together with our families we learn together and prepare our tamariki for the future. We aim for students to leave BPS as well rounded, confident young people, equipped to learn independently, collaborate effectively and contribute to our society in a positive and productive way.

About Our School

Birkenhead Primary School, Te Kura Matarae o Onewa, opened its doors in 1919 and sits in the heart of Birkenhead's Highbury Village. It is a state, co-educational, contributing primary school catering for school Years 1 to 6.

"The school celebrates individuality and inclusion, is responsive to children's wellbeing and learning, and caters well for children who need additional learning support. Achievement information is used very well by leaders and teachers to shape programmes to accelerate children's progress..." "The school's curriculum and teaching programmes are effective in supporting children to achieve the valued outcomes identified in the school's charter and The New Zealand Curriculum (NZC). The school's values of "learning, community and respect" are enacted through the curriculum and all school systems are aligned to the school's pursuit of equitable and excellent outcomes for all children." ERO 2017

Our school vision statement is "to grow active learners who make a positive difference - Te poipoi i te ngākau hīhiko kia ngākau pai ai te ākonga ki te ao". We live this statement through our BPS kaupapa and dispositions.


BPS offers a full curriculum, with strong tuition in numeracy and literacy, an Inquiry approach in Social Science and Science, and opportunities in physical activity and the Arts. We provide a positive learning environment, with passionate teachers and a range of opportunities for children to participate, contribute, take responsibility and challenge themselves.

"Teachers provide positive classroom environments and children engage well in learning programmes. The school curriculum builds on children's interests, provides meaningful contexts for literacy, numeracy and especially for science and social science learning. The school's 'inquiry model' supports children's thinking and skill development. The use of community resources and expertise from university scientific partnerships enriches children's learning." ERO 2017

As an increasingly multicultural school, the school prioritises building on the diverse range of cultural and learning experiences that children bring with them. Special effort is made to strengthen links to our whānau Māori and has resulted in the establishment of Te Whānau Wawata. This is helping to foster learning about te reo and Tikanga Māori for both teachers and children and further enhances outcomes for Māori children. All children's wellbeing and learning are prioritised and intentionally supported through a range of strategies and learning support programmes. Children describe our school as a safe and happy place to be and there is a very positive tone in the playground and classrooms.

In order to **grow active learners who make a positive difference** we will...
Whāia te mātauranga hei oranga mō koutou, mō te iwi, mō te ao...

Strategic Plan



Continue to shape teachers and leaders understanding of effective collaborative practice and student agency

- Engage PD to refine effective collaborative pedagogy and student agency.
- Increase student assessment capability.
- Develop a progression of inquiry skills, implement the inquiry framework in the senior school and learning through Inquiry Provocations in the junior school.
- Embed real-time, responsive assessment and reporting approach that supports student agency, and home-school partnership.
- Build leadership capabilities with senior leadership, middle leadership, staff and children.




Live our school wide vision & kaupapa

- Provide a wide range of opportunities for our students to participate in and to recognise achievement school wide.
- Continue to focus on high quality effective support programmes for students with individual needs.
- Use UDL practices to ensure learning is fully inclusive and promotes success for all learners.
- Teachers, children and whānau to live our vision and kaupapa.
- Provide a wide range of educational and other opportunities that will challenge and are linked to personal motivations.



Provide a progression of multicultural experiences while acknowledging our responsibility to Te Tiriti o Waitangi

- Through Te Ao Maori, embed a cultural and Te Reo framework progression across the school (Kahui Ako), including Tikanga.
- Provide a wide range of educational and other opportunities that will challenge and are linked to personal motivations.
- Maintain reciprocal links with local iwi, hapū and whānau and kahui ako to embed our local histories curriculum.
- Recognise, value and celebrate the many cultures that make up our community.



Ensure the wellbeing of staff, students and community

- Continual evaluation of the wellbeing of children in line with NCOL.
- Work collaboratively with the Kahui Ako and LSC's to implement and utilise across COL initiatives.
- Foster our wellness plan to enhance mental health and resilience.
- Build upon staff wellbeing.
- Continue to foster whānau / school partnerships.

B Building connections.
Mahi Tahī.
Contributing & Collaborative.

P Persevere to be the best we can be.
Kia Manawhānui, Kia Manawarua.
Resilient & Inquiring.

S Show respect in all we do.
Mamaakitanga.
Integrity, Inclusive & Kind.

Our Staff

Tumuaki / Principal - Francis Naera

Tumuaki Tuarua /Deputy Principal - Samantha Knowles

Learning Support Coordinator - Catherine Eichmann

Pikiake Team - Year 0/1

Team Leader - Simone Nair

Fiona Bendall, Anita Scoringe, Kerrie Little, Anna Robison, Meg Huffadine

Tuputupu Team - Year 2/3

Team Leader - Imogen Macartney

Lynsey Yelland, Danae Brodie, Rochelle Henry, Olivia Mclean, Lara Hampson-Tindale

Whanake Team - Year 4/5

Team Leader - Alice Saunders

Michelle Thompson, Gabrielle Lewthwaite, Kelly-Anne Foskin, Rachel Nugent, Sarah Mcmenamin

Panuku Team - Year 6

Team Leader - Stacey Huata

Imogen Field, Nathaniel Milnes

Classroom Release

Kylie Allard, Andy Dwyer, Rose Bentley, Alana Basile

Learning Support

Sarah Bassett, Debbie Clifford, Ashley Phillips, Anya Lemoto, Nicole Young (ESOL),
Nicole Ashby(Ed psych)

Admin Team

Trudy Medemblik, Stephanie Browning

Finance Administrator - Angharad (Harry) Yearbury

Librarian and Resources - Amanda Davies

Property Manager - Logan Smith

Maths Curriculum Consultant - Alice Ho

Our Teams

Our school is organised into four teams:

Pikiake (Years 0-1) means to climb up or grow. A big focus for us in Pikiake is developing the children's confidence and laying the foundations for their future learning.

Tuputupu (Years 2-3) means to grow and develop. In Tuputupu, teachers support children to grow independence in their learning.

Whanake (Years 4-5) means to grow, develop and move onwards and upwards. Whanake builds on prior knowledge to encourage children to take ownership of their learning.

Panuku (Year 6) means to move, move on. Panuku teachers aim to grow leadership potential, strengthen student agency and provide opportunities to be involved in school and the wider community.



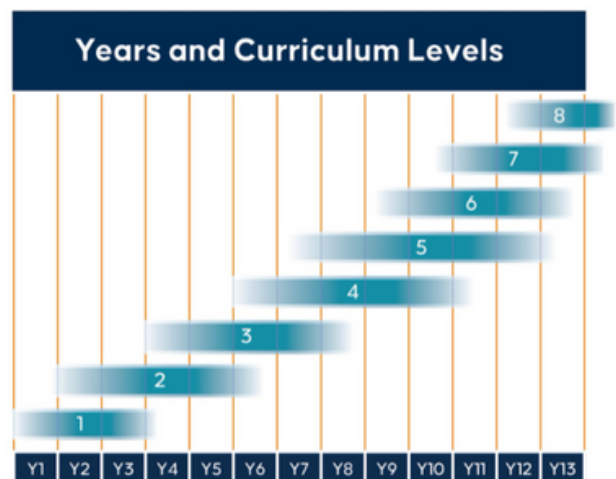
Composite Classes

Traditionally classrooms have been organised by year level, however, all our classrooms (apart from Year 6) are composite classrooms. A composite class is made up of children across two year levels, e.g. Year 0-1, Year 2-3, Year 4-5.

The key to understanding this approach is to appreciate “growth and learning is determined by stages, not ages”.

The New Zealand Curriculum is set up in developmental stages/levels which span roughly three year levels. The diagram below shows the levels of the New Zealand Curriculum and how they correlate with a number of year levels. As you will note it is not as simple as Year 1 teaches level 1, Year 2 teaches level 2 etc. This type of curriculum allows teachers the flexibility to extend and support children dependent on their developmental stage/level rather than having a rigid curriculum based on age.

Teachers at Birkenhead Primary School are highly competent and skilled at responding to the needs of each child. Although a child might be chronologically older or younger—their maturity, social needs, academic and behavioural needs are all individual. Regardless of the type of classroom a child is in, teachers will group and teach children according to their specific learning needs. There is no difference in the range of abilities present in a traditional ‘straight’ year group classroom compared to that of a composite.



The practice seen in a traditional classroom will be the same in a composite classroom - the child will remain at the centre of the learning and teaching will extend and support them as required.

Studies have found that children in composite classes do ‘no better or worse’ academically than their peers in traditional ‘straight’ year group classrooms.

However, research has shown that children in composite classrooms are often socially more developed than those in traditional classrooms. They tend to become more confident and are able to work alongside and cooperate with a wider range of children. They also develop relationships outside of their ‘standard age-groups’ and can relate and communicate with a wider range of peers. This approach also allows for peer modelling, where those more socially able students ‘set the tone’ within the classroom. Irrespective of age, all children can be role models.

Welcome - Mihi Whakatau

When your child starts school we like to formally welcome you all with a whakatau. This is often on your child's first day or close to it. When you enrol you will be informed of the whakatau date.

A whakatau is a traditional Maori welcome that is less formal than a pōwhiri. We believe welcoming tamariki and whānau into the school is an important part of developing long-lasting relationships.

To begin the whakatau, new tamariki and whanau are called through with a Karanga into the hall and you will sit at the front. There will be a few introductions, waiatas and the kapa haka group will perform. You will be able to sit with your child during the whakatau.

If you would like to introduce yourself and whanau, you are welcome to do so. If you plan to introduce yourself, please let Samantha Knowles (sknowles@bps.school.nz) know so this can be organised.

Afterwards, there will be tea and coffee and a chance to meet the other new families.

School Times

Children should be at school at about 8.30 am, which allows them enough time to settle in for the day but not enough time to get into mischief. Before 8.30 am, classes are closed to allow teachers time to prepare for the day. A bell will ring at 8.30 am to let the children know they can go inside their class. If your child does need to be dropped at school earlier than 8.30 am or needs after school care, we do have OSCAR onsite in the school hall. You can access booking information on the school website.

8.50 am	School starts
10.00 am	FAVE (fresh fruit and veggie snack)
11.00 am	Playtime
11.20-11.30 am	Eat morning Tea
12.45 pm	Lunch play
1.22-1.35 pm	Lunch eating
3.00 pm	Hometime

Pick up and Drop off

We encourage parents to provide supervision for our young students on their way to and from school, and not to let them walk alone. There are several Walking School Buses operating. Registration forms can be picked up from the office. Children may scooter or bike to school, with adult supervision (Years 0-3) without supervision (Years 4-6). They must wear a securely fitted helmet. Scooters and bikes may not be ridden on the school grounds before or after school (this includes preschoolers).

Please ensure your child is collected at 3.00 pm. Please make sure your child knows who is picking them up and where to meet them. If there is a change in pick up plans or you are running late, please ensure to call the office on 4807365.

If you are using the drop off zone, please use it as it is designed. If you are picking your child up, please try to arrive from 3.05 pm to give them a chance to make their way there.

Before & After School Care

OSCAR is our before/ after school care and holiday programme run at BPS. This operates out of our school hall from 7.30- 8.30 and then 3.00- 6.00. Please check out their tab on our school website for booking.

Attendance

Once your child is enrolled and starts school, it is expected that they attend regularly, unless they are unwell. Young children become more confident and settled when they attend regularly, and their progress is steadier when they are practising new skills daily.

Please report all absences to the office by 8.45 am every day - Ph. 4807365 or email absence@bps.school.nz. If your child is late to school for any reason, they will need to check-in at the office before going to class. If you are visiting the school or need to collect your child for an appointment, etc, please make sure to sign in and out at the office.

You can also submit an absence via the Hero Parent Portal.

Keeping us Informed

It is very important that we know any information that may affect your child's safety, learning or wellbeing. It is best to contact the Principal or DP before your child's start date to discuss any issues that may affect your child once they are at school. If your child requires medication, there are procedures around storing and administering this. If, at any time throughout the year your contact details change or medical issues require updating, please contact the office immediately.

Reporting to Parents

We will have a Meet the Teacher (whanaungatanga) day in Term 1. In Term 2, there will be a Parent/Teacher conference for your child. In Term 3, we will have an Exhibition of Learning. Your child's teacher will be happy to give you regular feedback throughout the year, but if you are looking for a more in-depth discussion, it is preferable that you make an appointment with them. All progress data and goals can also be found on Hero, our student management system.

Lunch

It is important that your child has enough energy to last the day. We promote healthy food options in school. Sandwiches, fruit and vegetables are all great brain food for your child. We prefer it if chocolate, lollies and sugary drinks are kept for outside school treats. We have a 5 minute F.A.V.E (fruit and vegetable energiser) break at 10.00 am each day. It is really helpful if any fruit or vegetable they bring is chopped up so it is quick and easy to eat. Please note: we are a 'rubbish free' school, so children will bring home any food wrappers or uneaten food.

Playgrounds

We have two large playgrounds. We also have other play spaces such as the battens, tyre area where the Year 2-6 children can build wooden structures, the play boat, hobbit tunnel, village green, three hard courts and a large playing field.

Lunch Time Activities

We have a range of lunchtime activities catering for many interests. Nature Team, Coding Club, Drawing and Construction, Whānau Leader and Student Council, Dance Party and Quiet Space. There are some activities on every lunchtime and the library is open everyday.

Uniform

In 2022 we surveyed our community in regard to a compulsory school uniform. With such a large percentage of caregivers providing feedback, it has enabled the Board to make an informed decision about the community view. Having reviewed the numbers and the comments, we have decided to update our uniform policy to reflect the key items below.

- the uniform will not be made compulsory.
- students will need to wear their school shirt (and hat if in term 1 or 4) on all school trips and when representing the school.
- the type of pants they wear with their school shorts remains shorts/leggings/skirt/pants (with a preference for navy/black)
- The students will be strongly encouraged to wear their school t-shirts on Fridays.

This means that families will need to purchase a school t-shirt (and we know that from next year we will have a second-hand stock available) as a minimum. All students, when they start at BPS, will be given a school hat as a welcome gift. We encourage everyone to embrace the uniform. We understand that parents value the 'option' of the uniform and we think this policy represents a good balance for our school.

Uniforms can be purchased through the NZ Uniform website, which offers internet banking, credit card and Zip/AfterPay purchase options, and also WINZ subsidy options to make it easier for every family. <https://www.nzuniforms.com/>

Sun Safety

Brimmed hats are compulsory in Terms 1 and 4 (no caps). We recommend children wear clothing that covers their shoulders. We also recommend applying sunscreen before school. We appreciate your support in reinforcing the sun safety message. Any children without a brimmed hat in Terms 1 and 4 will be required to stay in the shade during break times and during Fitness or PE.

Clothing & Footwear

Children are required to have footwear (such as shoes or sandals) when walking to and from school. Jandals or slides are not permitted. However, **children must wear enclosed footwear and a school t-shirt for all school trips**. Please ensure all items of clothing are named. It is a good idea to have a change of clothing in school bags in case of accidents, or wet / muddy play.

Stationery

Pre-packed stationery is available from Paper Plus, Birkenhead. The Pack number/amount of stationery your child will need will depend on the time of year your child is starting school. Please check with the school office regarding stationery requirements for your child.

Special Items

We strongly suggest that toys and other precious objects are not brought to school. On occasion, the children may bring an item connected to a topic being learned in class. Your teacher will keep you informed if this is the case. Staff cannot be held responsible for finding lost items. Older students may require a phone for travel/family arrangements or after school activities. These are to be handed to the school office on arrival and collected at 3.00 pm.

School Contributions

The school donation is a voluntary contribution made by parents, and it is an essential element of our operating budget. A percentage of this donation can be claimed back at the end of the tax year. These donations to the school help the Board fund many extra educational opportunities and allow important projects, programmes and initiatives for students to be developed and sustained. The Board sets the parent contribution amount each year. See below for details.

The activity fee is a one-off sum that parents can pay at the beginning of the year that covers the costs of all class trips out of school, as well as performances that happen in school. A separate EOTC amount is requested for students in Years 4-6 to cover the cost of camps.

School Donation 2024

\$315.00 (First child) \$235.00 (Second child) \$550.00 (Maximum per family)

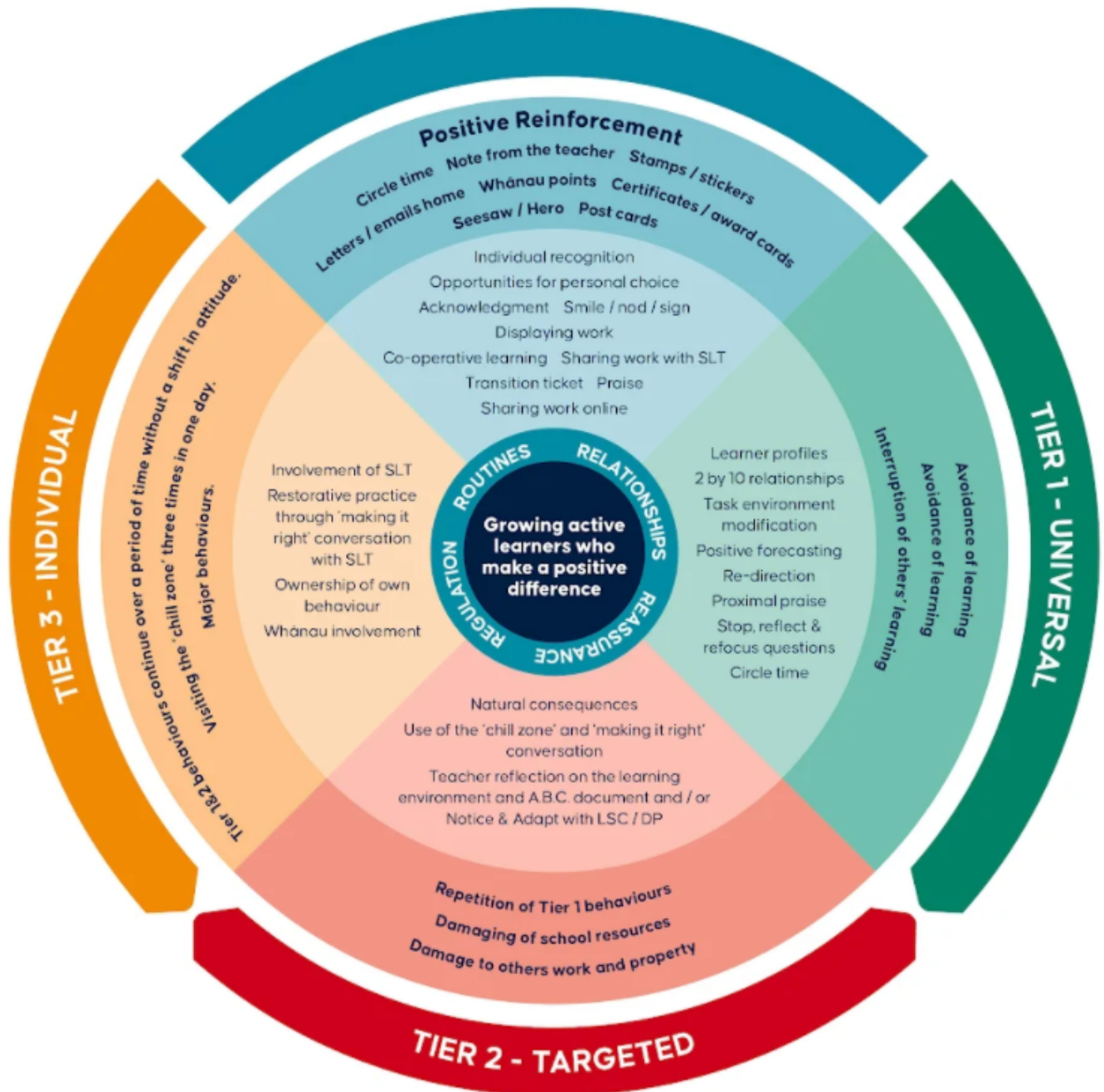
Activity Fee 2024

Year 1 - Year 3 \$60.00 (per child) Year 4 - Year 6 \$75.00 (per child)

EOTC Contribution 2024

Year 4 - \$ 120.00 (Term 1) Year 5 - \$180.00 (Term 1) Year 6 - \$325.00 (Term 1)

BPS Behaviour Plan



Leadership Opportunites

Panuku children can sign up/train for:

- Road Patrol
- Peer Mediator
- Sports Shed Monitors
- Whānau Leaders
- Librarian
- Nature Team Leader
- Recycling Monitor
- Assembly Set Up
- Wet Day Monitors
- Assembly Technician

Some of these responsibilities are offered to Year 5 in Term 4 in preparation for Year 6.

After School Sports

Basketball - Years 2-6

Splash Polo - Years 5 & 6 and Year 4's with strong swimming ability

Hockey - Years 3-6

Netball - Years 1-6

Summer Hockey - Years 1-6

Summer Soccer - Years 2-6

Summer Netball - Years 2-6

When code details are available we will advise our families accordingly.

For more information please contact Ms Macartney - xsports@bps.school.nz

Homework

At Birkenhead Primary School we do not set formal home learning. We encourage our students to be active outside school hours, and our parents to help their children by:

- encouraging reading for pleasure and information
- listening to them talk about things that interest them
- engaging with what they're doing at school
- encouraging them to be physically active
- giving them the opportunity to help at home.

Library

Children are able to get two books out each week and can have these issued for two weeks. Books can be reissued if more time is needed to read them. Children will not be able to get new books out until old books have been returned. Library books may form part of weekly reading homework. Children can also visit the library during lunchtimes (Year 6 library monitors will be available during lunchtimes to return and issue books).

Assemblies

Whole school assemblies are held every second Friday in the hall at 9.00 am. Parents are more than welcome to attend.

Swimming

Year 0-3 children will have regular swimming sessions in our school pool. We do need a parent helper at each of these sessions, so if you are able to help with one or more sessions, please let your child's teacher know. Years 4-6 start the year with an intensive swimming programme at Osborne Pools.

Term Dates

Term one: Wednesday 7 February 2024 to Friday 12 April 2024

Term two: Monday 29 April 2024 to Friday 5 July 2024

Term three: Monday 22 July 2024 to Friday 27 September 2024

Term four: Monday 14 October 2024 to Thursday 19 December 2024

Education Outside The Classroom

At BPS, we have an Education Outside the Classroom (EOTC) programme that supports our learning programmes from Year 0-6. For Pikiake and Tuputupu teams, this mainly relates to utilising our school environment, surrounding beaches and bush, as well as specialist sites such as MOTAT, Kelly Tarltons and the Auckland Museum. EOTC is a compulsory part of our BPS curriculum and we support all families to ensure their child has the opportunity to participate.

Our older children (Whanake and Panuku) can visit these sites and have the privilege of overnight experiences that scaffold the tamariki successfully to enjoy these experiences. As Whanake are composite classes, the year 4 & 5 children have a 3-day EOTC experience appropriate to their age and supports our school vision and strategic plan.

ESOL

For those children for whom English is their second language, the school may provide additional English tuition in small withdrawal groups or in their classrooms.

Enviroschool

The school has an active enviro group (Nature Team) that looks after our bush reserve, maintains the school gardens and orchard, and undertakes projects to encourage native fauna within the school grounds. Our Weta Hotels, decorated beautifully, are placed in the Lawson Reserve. We have continued planting and weeding the reserve, and have started a special fern garden by the gate. Nature Team Leaders regularly monitor water quality and invertebrates in nearby Le Roy's Bush. Classes have recycling bins, soft plastic bags, GOOSE paper bins and worm bins too.

We are a Silver Enviroschool. Enviroschools gives children and young people an opportunity to explore real life challenges and to contribute their energy and ideas towards sustainability. The Enviroschools philosophy involves creating a healthy, peaceful and sustainable world through facilitating action-learning. The children engage in hands-on practical learning and increase their confidence and recognition of the different skills and qualities of themselves and others.

Parent Help

The school encourages the use of parent/caregiver volunteers in the classroom:

- Making equipment
- Assisting with group supervision

Parents/caregivers need to be reminded that often they are not the most appropriate person to assist their own child and whatever they see or hear in the course of their assistance is confidential.

Teachers need to provide clear guidelines for parent helpers and due to the Covid-19 vaccination mandate, all parent helpers will be required to provide proof of vaccination prior to volunteering at school.

If you are interested in parent-helping in your child's classroom, please let your child's teacher know. We are always looking for parents or whānau members who might like to return readers to the Resource Room, listen to children read, sharpen pencils, laminate, cut out resources and back children's work, etc.

PTA (Parent Teacher Association)

We have a hands-on, active PTA at Birkenhead Primary, whose purpose is to fundraise money for the school to benefit your children, support teachers and buy essential resources. The PTA are always on the lookout for more help - be a Friend of the PTA, or come along to a meeting or two, or become a regular member - any contribution you can make is welcome. Make sure you 'like' their Facebook page facebook.com/bpsptanz so you are always kept up-to-date on everything PTA related. If you are interested in finding out more have a look at their brochure or email pta@bps.school.nz.

BPS Board

We have a wonderful Board that represents our school community and provides excellent governance and support. If you are interested in finding out more, or would like to contact them, please email bot@bps.school.nz.

HERO - Parent Portal

At BPS we use a secure online sharing platform called Hero. All our general communication is shared via this app. To register and log in please go to <https://hero.linc-ed.com/> on your desk top or search for Linc Ed Hero in the app store on your mobile device.

You will need to register with the email address you provided the school on enrolment.

Once you have logged in you will be able to view:

- learning stories
- assessments
- progress data
- school notices
- pay your account online
- notify absences



If you have any issues setting up or accessing Hero on either your phone or desk top please contact sknowles@bps.school.nz who will be able to help you.

Website / Facebook / Cyber Safety

Our school website is www.bps.school.nz/ - there is a range of useful information to be found here. You might also like to "like" our school Facebook page - there are often handy reminders, information about upcoming events, and snippets of school life posted in a more informal forum: <https://www.facebook.com/birkenheadprimary/>.

Cyber Safety is monitored and filtered by Linewize <https://www.linewize.io/anz> - Linewize is a company that specialises in cyber safety for schools. They provide us with content and screen visibility of all devices in every classroom. This comprehensive system automatically alerts us to any inappropriate searches in real time, whilst simultaneously blocking access. Linewize also offers a 'family zone' community package, which can extend these filters to your home devices. For more information please visit the website above.

At Birkenhead Primary School we follow a Digital Citizenship model for supporting safe and responsible use of the internet in teaching and learning. An important part of this is that everyone is able to show others what being responsible use looks like while using technology. All students and Staff are required to sign a 'Responsible Use Agreement'.

Keeping our students safe online is very important to us.

Enrolment Checklist

To complete enrolment we require:

- Completed Enrolment form online
- Supplementary ESOL Enrolment form if English is not your child's first language
- Birth Certificate
- Current Passport with Immigration documents, if appropriate
- Student Visa/Permit (if appropriate)
- All Immunisation documents must be provided.
- 3 forms of evidence of your residential address for zoning purposes- e.g. recent power bill, tenancy agreement etc.

These must be no more than one month old.

NOTE: Bank statements are not sufficient as evidence for this purpose.

Enrolment Process

When you have provided all required documentation to the school office and after your interview with the Principal, Francis Naera, you will be advised of the dates that your child may visit the school. We do have a cohort entry policy in place and visit dates for New entrants are shown below:

For children starting in 2024, our visiting dates are:

Intake 1 (starting Wednesday 7 February): Thursday, 7 December and Friday, 15 December

Intake 2 (starting Monday 11 March): Thursday 22, 29 February & 7 March

Intake 3 (starting Monday 29 April): Thursday, 28 March & 4, 11 April

Intake 4 (starting Tuesday 4 June): Thursday, 16, 23, 30 May

Intake 5 (starting Monday 22 July): Thursday, 20, 27 June & 4 July

Intake 6 (starting Monday 26 August): Thursday, 8, 15, 22 August

Intake 7 (starting Monday 14 Oct): Thursday, 12, 19, 26 September

Intake 8 (starting Monday 18 November): Thursday, 31 October & 7, 14 November

All visits start at 9.00 am and finish at 10.00 am.

Details of visits will be confirmed in your welcome letter.

First visit: parents are welcome to stay with their child

Second visit: parents are encouraged to leave their child in the classroom

Third visit: parents meet with Deputy Principal and children spend time in the classroom

On any visit, parents are welcome to stay in the classroom to support their child.



Northcote Kāhui Ako

The Ministry of Education has introduced a new model for schools to collaborate. This model has been implemented in schools across the Northcote Kāhui Ako consisting of Birkenhead Primary School, Willow Park Primary School, Northcote Primary School, Onepoto Primary School, Tots Corner Early Childhood Centre, Northcote Baptist Early Childhood Centre, Northcote Intermediate School and Northcote College.

The aims of this collaboration include:

- Working together to identify needs and set priorities across learning communities
- More flexibility to create learning support that is innovative and responsive
- Facilitation to bring together local education and service providers to work collaboratively
- Sharing data to get a clear picture of local needs, resources and response options
- Enhance family and whānau connection points
- Enhance student learning and wellbeing
- Maximise opportunities for professional development
- Support seamless transition across a child's educational journey



Commonly Used Phrases

Te reo Moāri Phrase	Translation
Greetings and Farewells	
Kia Ora e te Whānau o BPS	Hello BPS family
Ata mārie	Good morning
Ahiahi mārie	Good afternoon
Tēnā koe	Hello (to one person)
Tēnā kōrua	Hello (to two people)
Tēnā koutou	Hello (to three or more people)
Ngā mihi nui	Greetings
Ngā mihi	Thank you, regards, congratulations
People	
Tamariki	Children
Manahuri	Visitors
Whānau	Family
Events	
Whakatau	Traditional welcome ceremony (less formal)
Pōwhiri	Traditional welcome ceremony (formal)
School Specific	
Kaitiaki teacher	Guardian - teacher (your first point of contact)
Pikiake Tahi (one)	Year 0/1 Mr Bruce, Mrs Bendall and Miss Robison
Pikiake Rua (two)	Year 0/1 Ms Little and Mrs Nair
Tuputupu Tahi (one)	Year 2/3 Miss Macartney, Miss Yelland and Mr Milnes
Tuputupu Rua (two)	Year 2/3 Mrs Henry, Mrs Brodie and Ms Scoringe
Whanake Tahi (one)	Year 4/5 Mr Nathan, Mrs Parrish and Mrs Thompson
Whanake Rua (two)	Year 4/5 Mrs Huata and Miss Foskin
Panuku	Year 6 Mrs Saunders and Miss Field
Whole School Groups	
Kōtuku (White Heron)	Whānau group - Yellow
Tuatara (Lizard)	Whānau group - Red
Tohōra (Whale)	Whānau group - Blue
Kauri (Tree)	Whānau group - Green
Phrases used in assembly and learning spaces	
Paki Paki	Round of applause (clap)
Homai te ...	Pass me the ...
E tū	Stand up
E noho	Sit down
Haere mai	Come here
Turituri	Be quiet
Titiro mai	Look at me
Kōrero	To speak
Kaupapa (dispostions)	
Mahi Tahi	Build Connections - work as one
Kia Manawanui, Kia Manawaroa	Persevere to be the best we can be
Manaakitanga	Show respect in all we do